

BioSprint 29 Camera Series

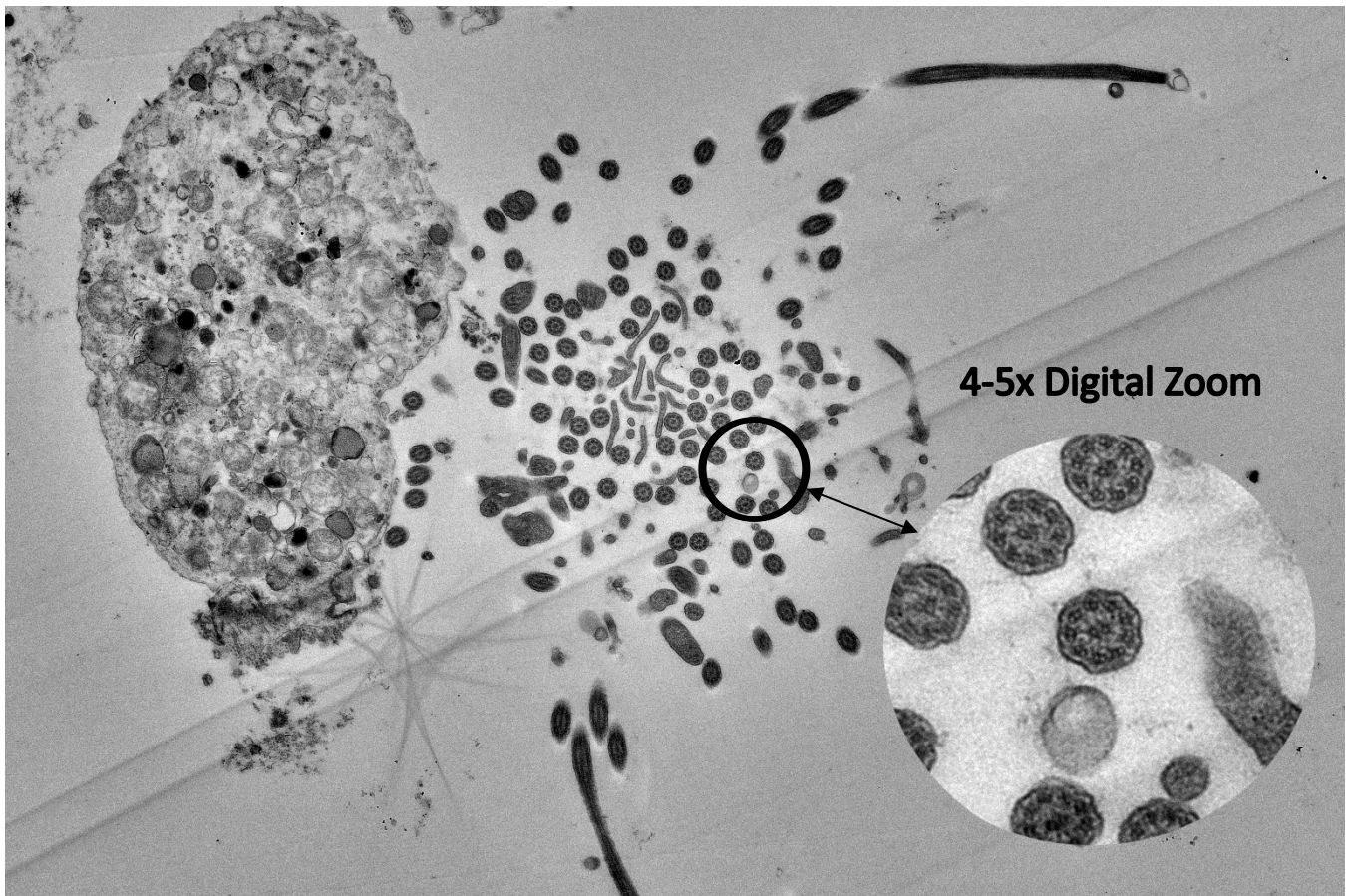
High Definition CCD Cameras for TEM

- 29 Megapixel Scientific CCD
- High Speed Readout
- Anti-Blooming Sensor
- High Performance Lens



AMT's BioSprint 29 megapixel camera system creates images that challenge film in definition. This system achieves high sensitivity and resolution by employing AMT's highly corrected *ActiveVu* lens. BioSprint 29 megapixel systems are available in low and mid-mount configurations with the mid-mount position being the most popular. This camera system is an excellent choice for clinical pathology and other high throughput biological applications. The BioSprint system delivers enough information that users may digitally enlarge their images multiple times without the worry of pixilation, which saves on both imaging and analysis time.

Enlargement Without Pixelation:



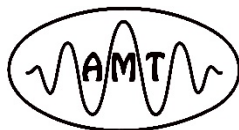
Advanced Microscopy Techniques 242 West Cummings Park, Woburn, MA 01801

Tel: (978)774-5550 Fax: (978)739-4313

Email: info@amtimaging.com URL: <http://www.amtimaging.com>



BioSprint29 Rev3



BioSprint 29 Specifications	
Sensor Size [pixels]	6576 x 4384
Phosphor Pixel Size [μm]	9.5
Active Pickup Region [mm]	62 x 41
Digitization	≥ 16 bits with frame accumulation
Mounting Position	On-Axis
HT Range [kV]	20–200
Optical Coupling	Custom high performance lens
Lens Magnification	1.72
Lens NA _{image}	1.88
Lens MTF at Nyquist [%]	>45
Framerate for Display Image [fps]	18 binning = 4
Cooling	Water
Micro Lenses	Yes
Shutter	Global
Exposure Time [ms]	1 - 10,000
Power	100-240VAC
Digital Interface	Camera Link
Vacuum Compatibility	$<10^{-7}$ torr
Vacuum Seals	Fixed o-ring
Environment	Electronics and cooling outside of vacuum
X-ray shielding limit	Up to 200kV
Certifications	UL, CE, RoHS
Computer OS	Windows 10 Professional 64 bits

Specifications are subject to change without notification*

Advanced Microscopy Techniques 242 West Cummings Park, Woburn, MA 01801

Tel: (978)774-5550 Fax: (978)739-4313

Email: info@amtimaging.com URL: <http://www.amtimaging.com>



BioSprint29 Rev3